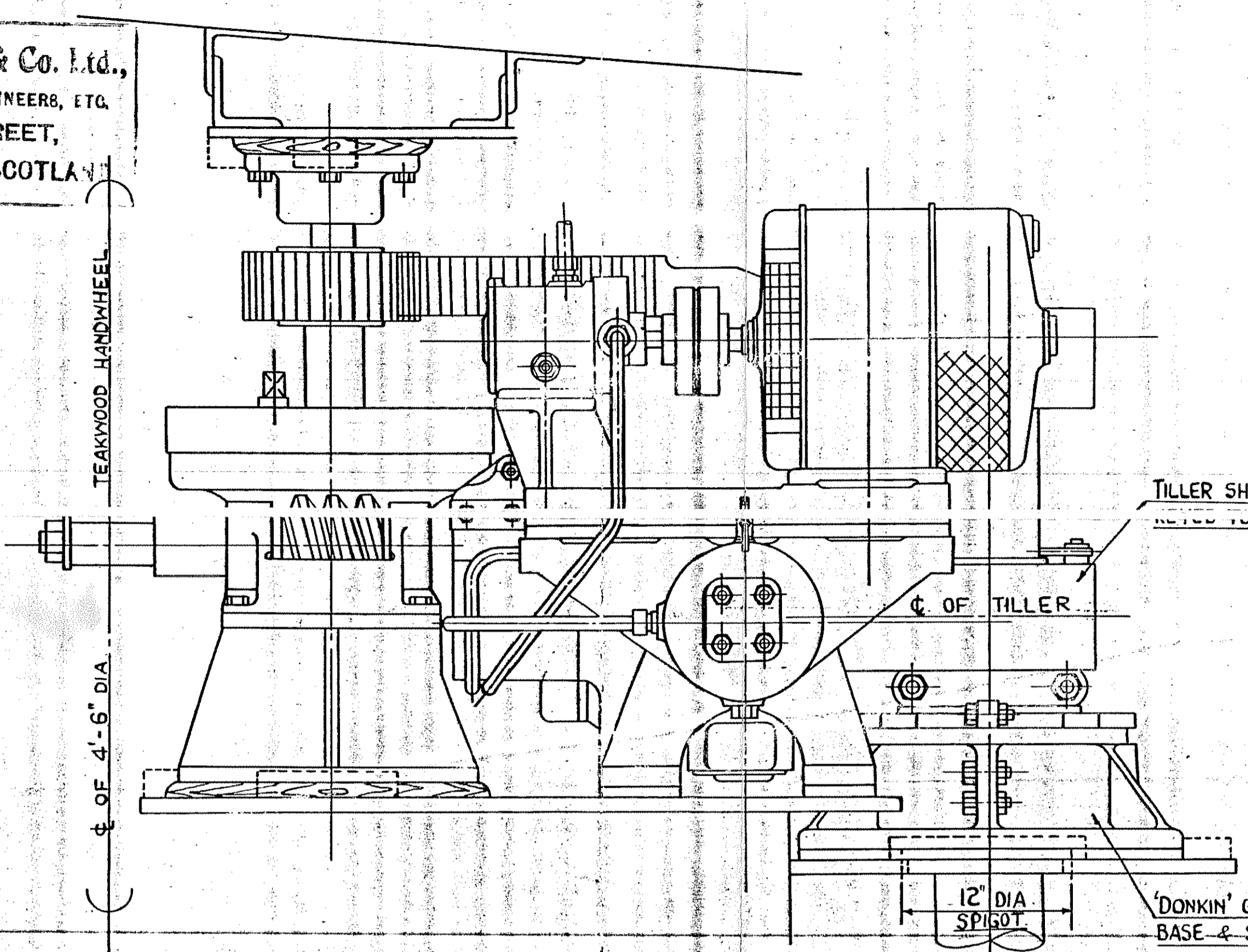


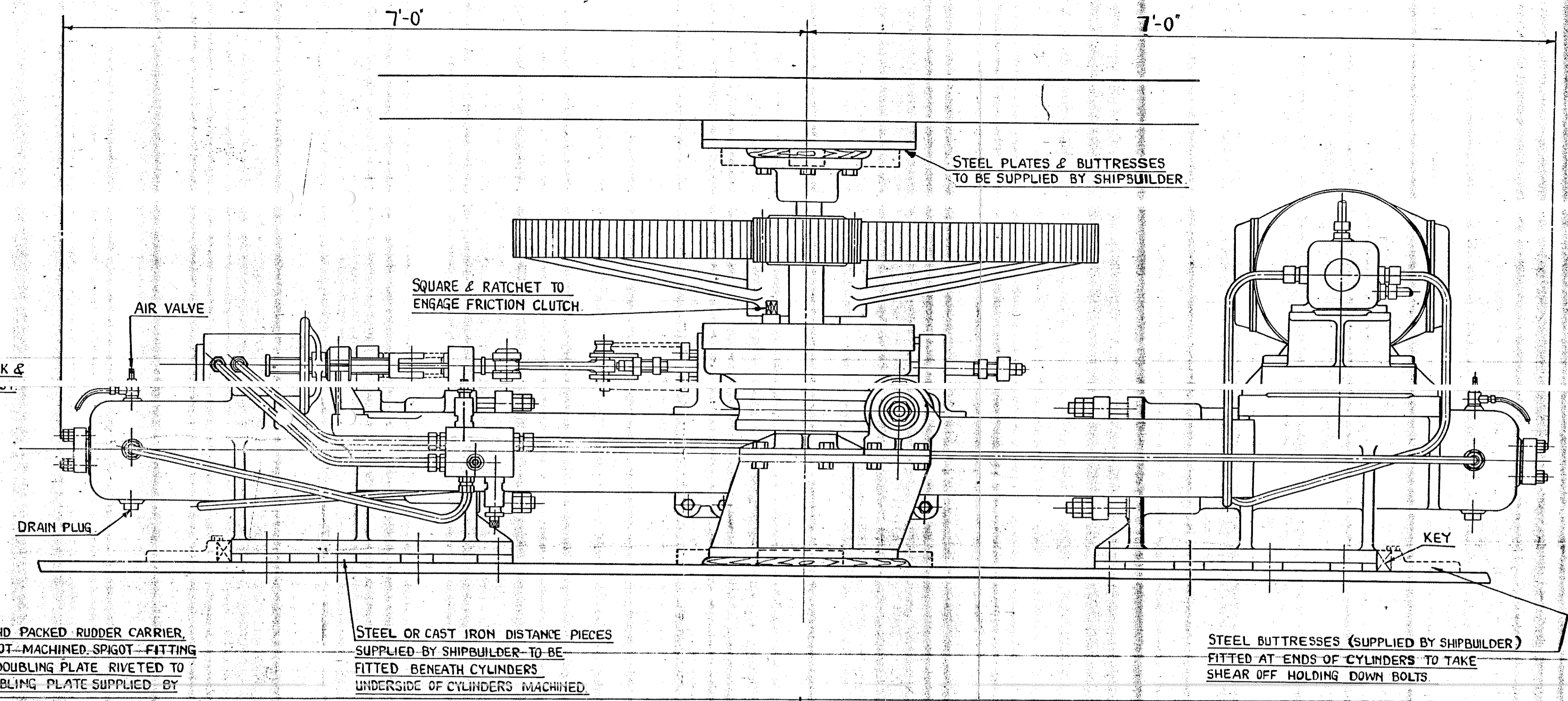
F.R.S. EXPLORER

ELECTRIC HYDRAULIC STEERING GEAR

ALEX. HALL & Co. Ltd.,
SHIPBUILDERS, ENGINEERS, ETC.
YORK STREET,
ABERDEEN, SCOTLAND



VIEW LOOKING TO PORT



TILLER SHRUNK & RIVETED TO POST.
CL OF TILLER.
12" DIA SPIGOT
'DONKIN' GLAND PACKED RUDDER CARRIER. BASE & SPIGOT MACHINED. SPIGOT FITTING INTO STEEL DOUBLING PLATE RIVETED TO SEATING. DOUBLING PLATE SUPPLIED BY SHIPBUILDER.

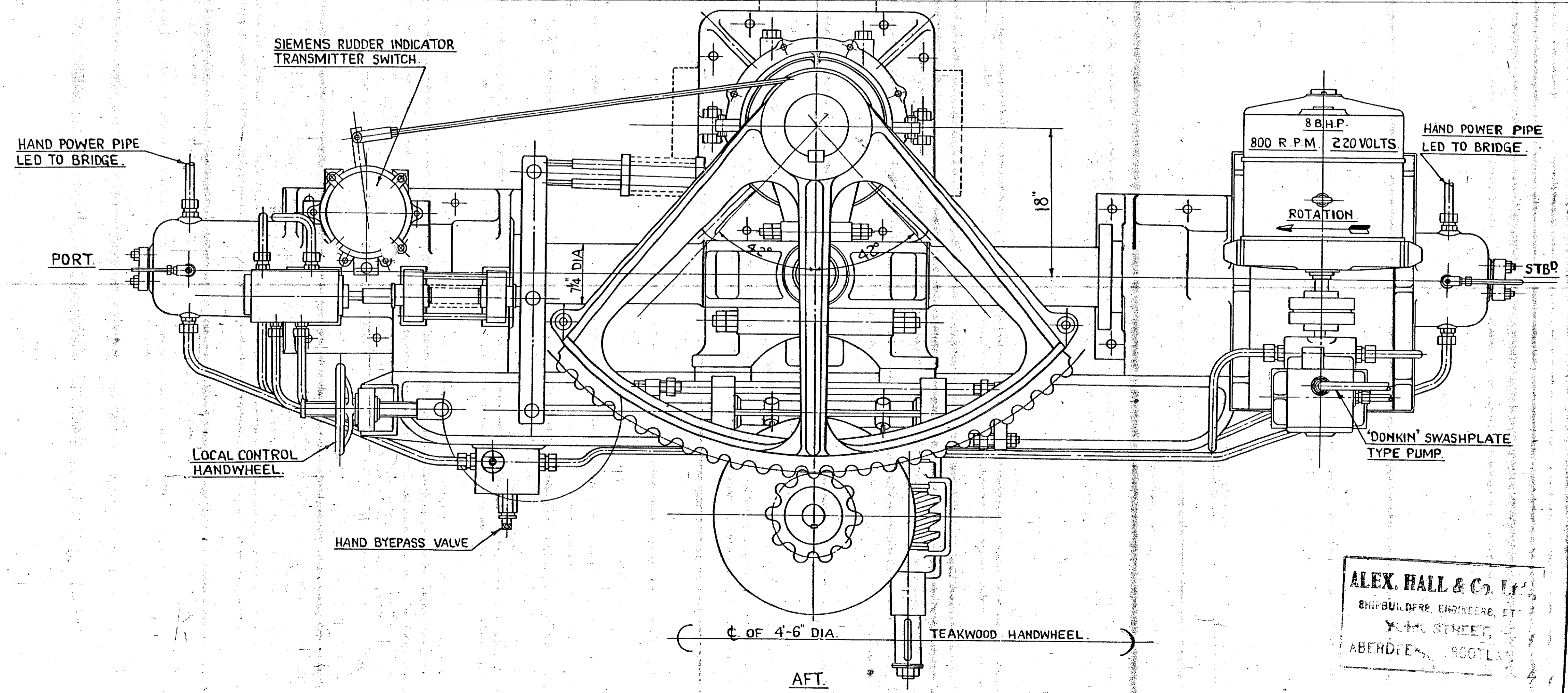
STEEL OR CAST IRON DISTANCE PIECES SUPPLIED BY SHIPBUILDER TO BE FITTED BENEATH CYLINDERS. UNDERSIDE OF CYLINDERS MACHINED.

STEEL BUTTRESSES (SUPPLIED BY SHIPBUILDER) FITTED AT ENDS OF CYLINDERS TO TAKE SHEAR OFF HOLDING DOWN BOLTS.

GENERAL ARRANGEMENT OF ELECTRIC HYDRAULIC STEERING GEAR.

SCALE: 1/2" = 1 FOOT.

DRG. No. 1700/54.



ALEX. HALL & Co. Ltd.,
SHIPBUILDERS, ENGINEERS, ETC.
YORK STREET,
ABERDEEN, SCOTLAND