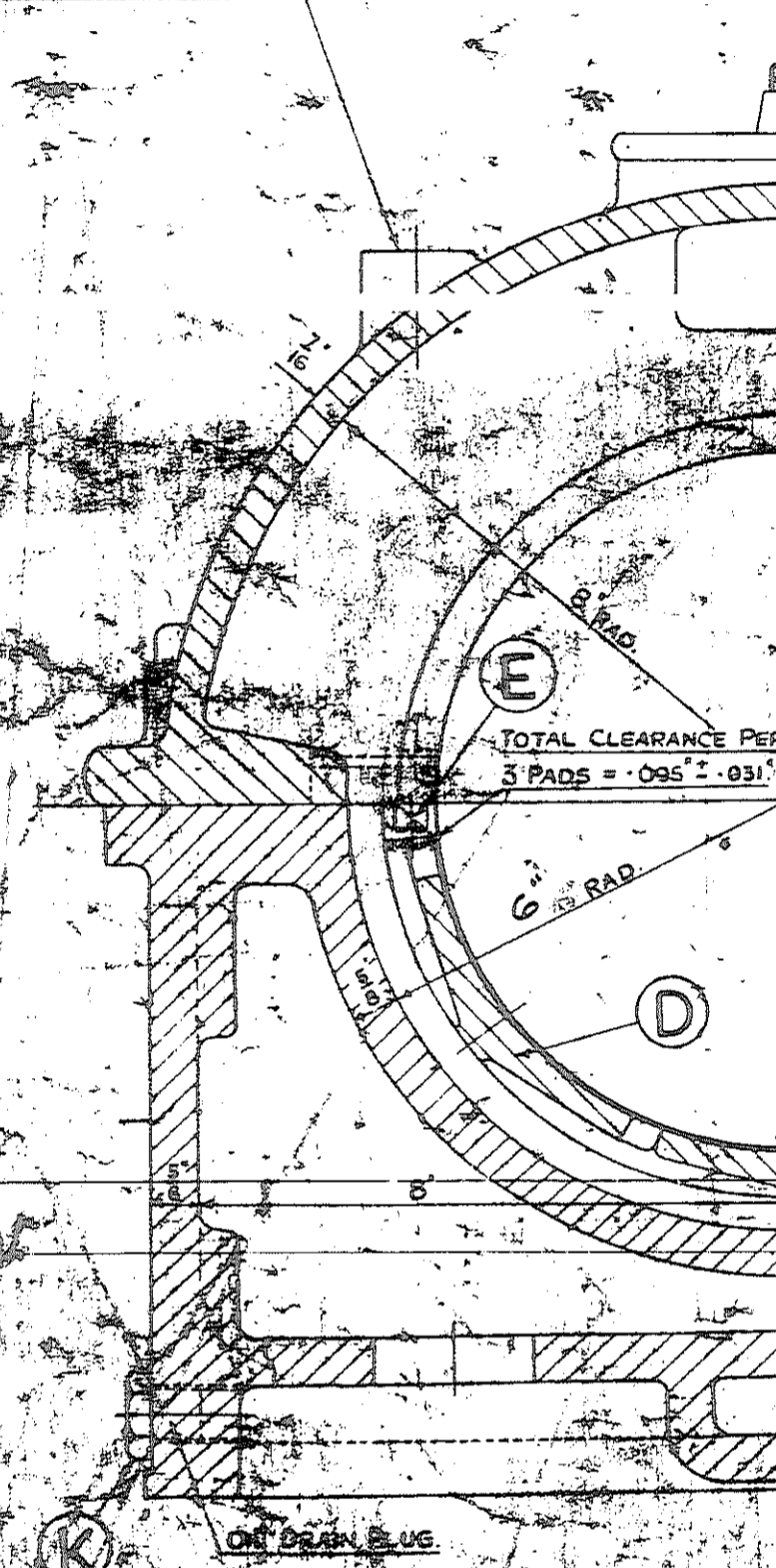
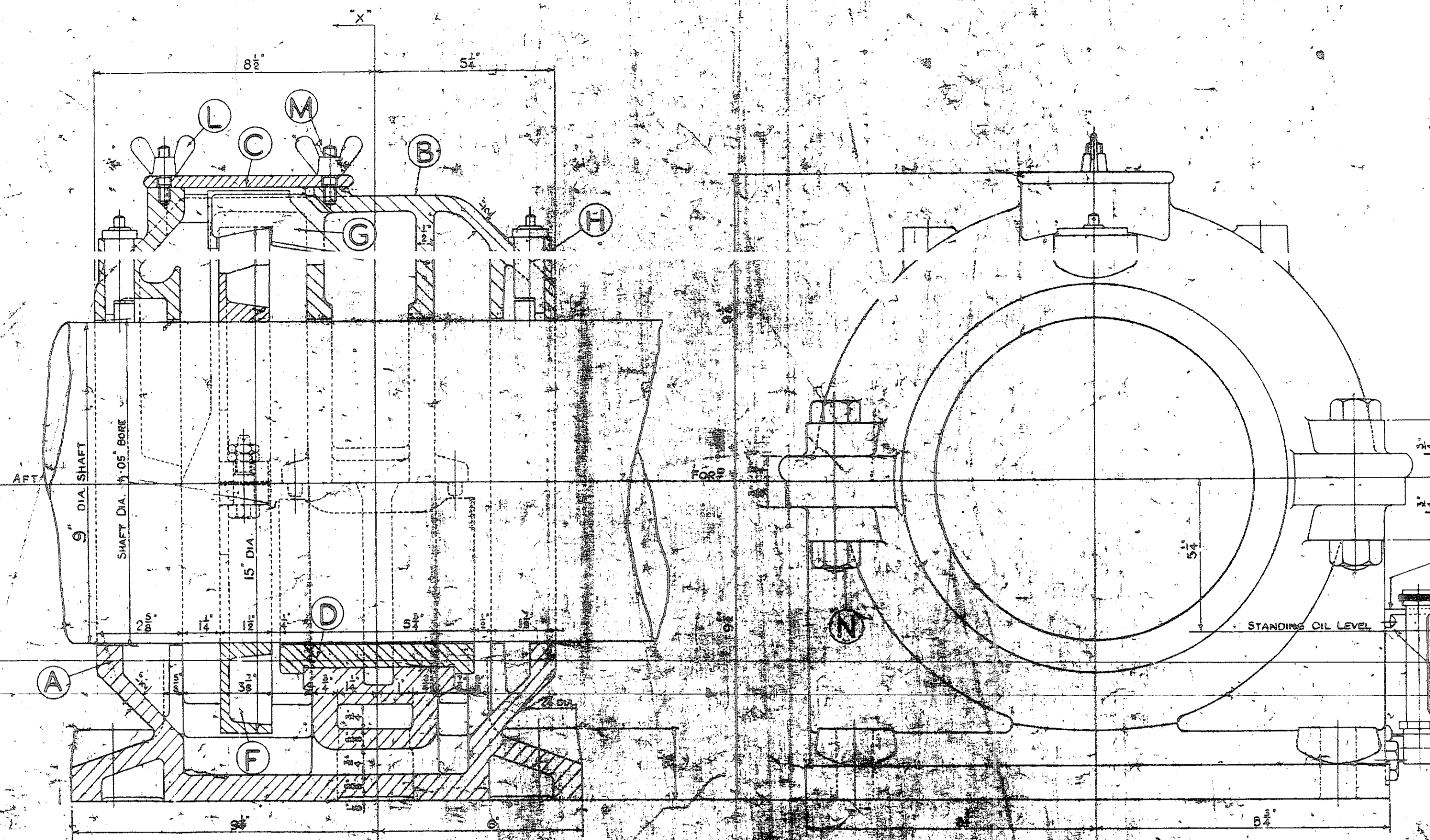


# F.R.S. EXPLORER MICHELL TUNNEL BEARING

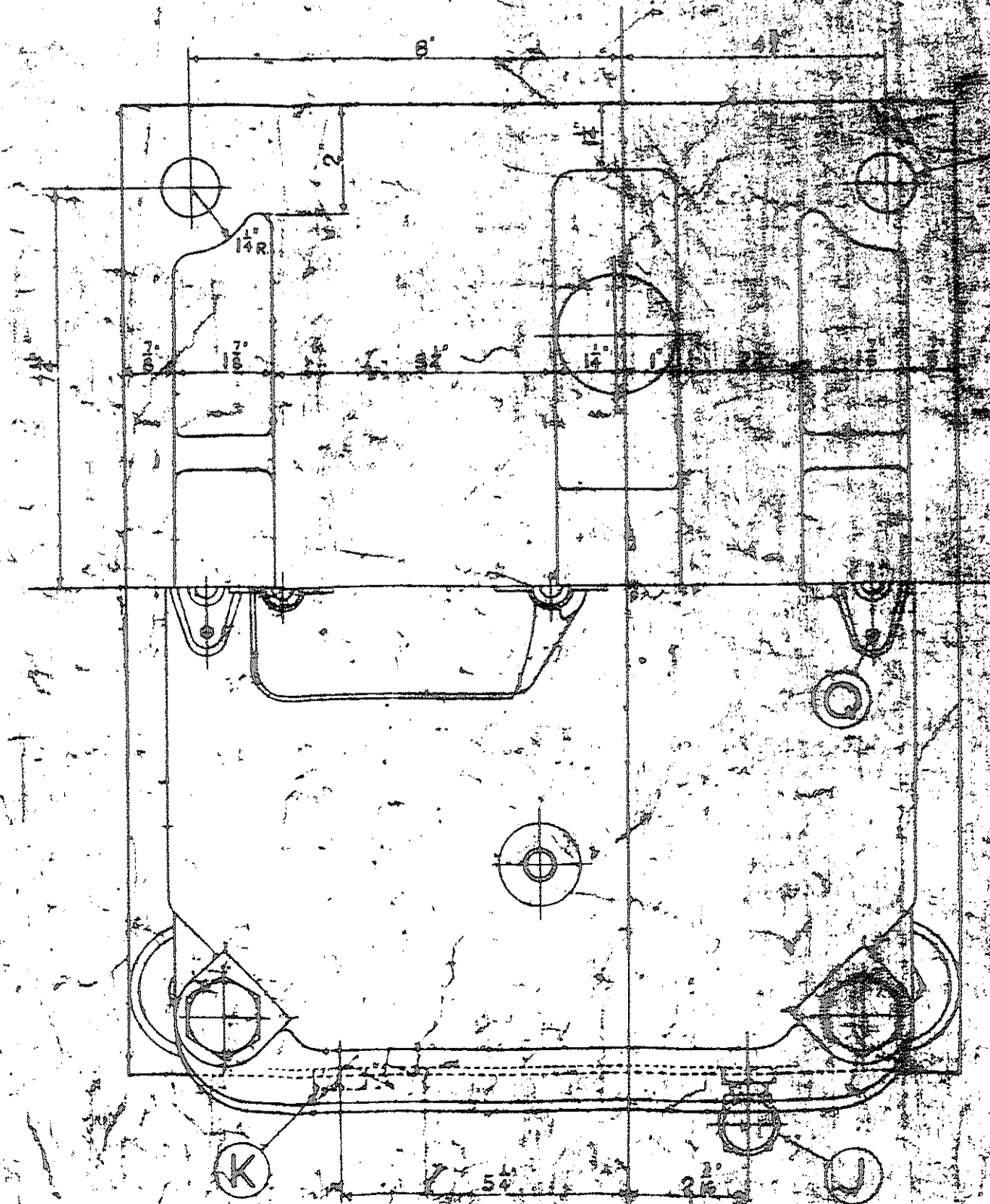
2- BOSSES TAPPED 5/8 WHIT.  
2 DEEP FOR LIFTING HOLES



SECTION AT A-A LOOKING AFT.



VIEW ON AFT END.



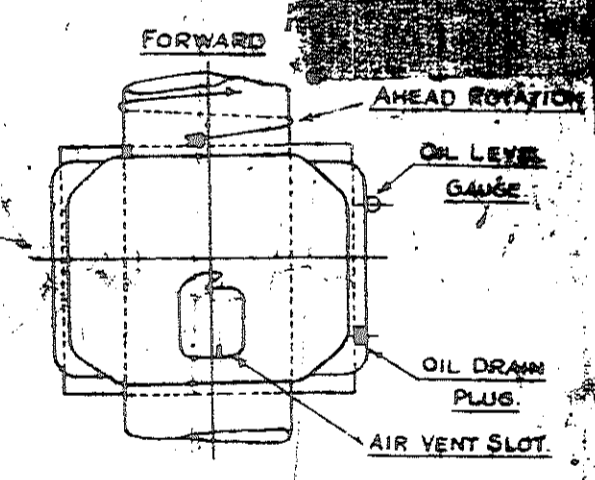
HALF BOLTING PLAN

HALF PLAN VIEW

REF	PART NO	PART	Nº OF	MATERIAL	REMARKS
A	E 509/13	CASING BOTTOM - AS DRAWN	1	CAST IRON	
	E 509/	" " - OPP. HAND			
B	E 709/5	CASING TOP	1	CAST IRON	
C	F 807/3	INSPECTION DOOR	1	CAST IRON	
D	9 4 M/3000	JOURNAL PAD	3	GUNMETAL	WHITEMETAL LINED
E	F 166/109	JOURNAL PAD STOP	4	MILD STEEL	
F	F 850/377	OIL THROWER RING	1	CAST IRON	
G	F 87/15	OIL SCRAPER	1	GUNMETAL	
H	FA 201/222	OIL DEFLECTOR	2	GUNMETAL	STD. 2/2 3/4
J	FA 206/15	OIL LEVEL GAUGE	1	GUNMETAL	STD. INT. 2 M
K	F 235/4	OIL DRAIN PLUG	1	MILD STEEL	STD. 2 B.S.P.
L	F 126/4	WINGNUTS	2	MANG. BRONZE	
M		STUDS	2	MILD STEEL	STD. 8/8 WHIT. X 1 1/8 LONG
N		JOINT BOLTS & NUTS	4	MILD STEEL	STD. 7/8 WHIT. FITTED X 4 1/8 LONG
Q		RD HD SCREWS	4	MILD STEEL	STD. 1/4 WHIT. X 1/2 LONG
R	F 218/7	OL LEVEL GAUGE CLIP	1	SHEET BRASS	SECURED BY 2 1/4 WHIT. RD HD. SCREWS 1/2 LONG

SHAFT DIA.	9	INS.
REVS PER MIN	118	
JOURNAL LOAD		LBS
JOURNAL SURFACE (PROJECTED)	47	SQ. IN.
JOURNAL PRESSURE		LBS/SQ. IN.
DIAMETRIC OIL CLEARANCE	.015	IN.

TAPPED HOLES MARKED OFF TO PLACE FROM CLIP. DRILL 1/8" DIA. 3/8" DEEP. MUST NOT PENETRATE.



SINGLE SCREW SHIP ONE SCREWS AS DRAWN.

**LEW HALL & Co. Ltd.**  
SHIPBUILDERS, ENGINEERS, ETC.  
10, YORK STREET,  
BERDEEN, SCOTLAND.

DATE	ORDER NO	FOR	SHIP	ENGR. NO	NO OF SHIPS	PER SHIP	REGD.	NO. OF SURVEY	PLANT
1 FEB 34	34978	ALEXANDER HALL & CO. LTD.	462		1				

**MICHELL TUNNEL BEARING.**  
SELF-LUBRICATING TYPE · MT. AIR COOLED.  
SCALE: 3/8" SIZE.  
**9MT/25476**

MICHELL BEARINGS LTD  
NEWCASTLE-UPON-TYNE  
25 JULY 46

9MT/25476